



IMPORTING UDS ON MICROSOFT HYPER-V

UDS Enterprise components are provided as Virtual Appliances. To upload these elements to the Microsoft Hyper-V platform it is necessary to perform the following tasks:

1. Download UDS Appliances

Access your account at:

<https://www.udsenderprise.com/en/accounts/login?next=/en/my-uds/>

Once inside, in the "My Downloads" section, select "UDS Enterprise Appliances compatible with Microsoft Hyper-V" (.VHDX format):

Component	Format	Version
UDS Enterprise Appliances compatible with VMware vSphere / Cloud Director	OVA	3.0
UDS Enterprise Appliances compatible with Citrix Hypervisor / XCP-ng	OVA	3.0
UDS Enterprise Appliances compatible with Nutanix AHV	RAW / QCOW2	3.0
UDS Enterprise Appliances compatible with Microsoft Azure	VHD	3.0
UDS Enterprise Appliances compatible with Microsoft Hyper-V	VHDX	3.0
UDS Enterprise Appliances for OpenStack, OpenNebula, Proxmox...	RAW	3.0
UDS Enterprise Appliances for OpenNebula, OpenStack, oVirt, Proxmox...	QCOW2	3.0

It will take you to a download repository where you will find the UDS Appliances:

Index of /3.0/stable/hyperv

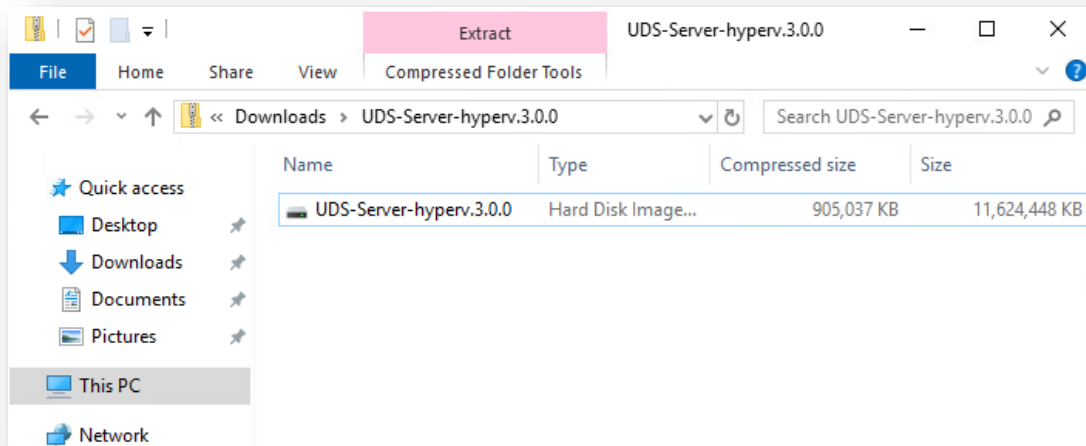
Name	Last modified	Size	Description
Parent Directory		-	
UDS-Dbserver-hyperv.3.0.0.zip	2021-05-18 11:55	556M	
UDS-Server-hyperv.3.0.0.zip	2021-05-18 11:56	884M	
UDS-Tunnel-hyperv.3.0.0.zip	2021-05-18 11:57	750M	

Apache/2.4.25 (Debian) Server at images.udsenderprise.com Port 443

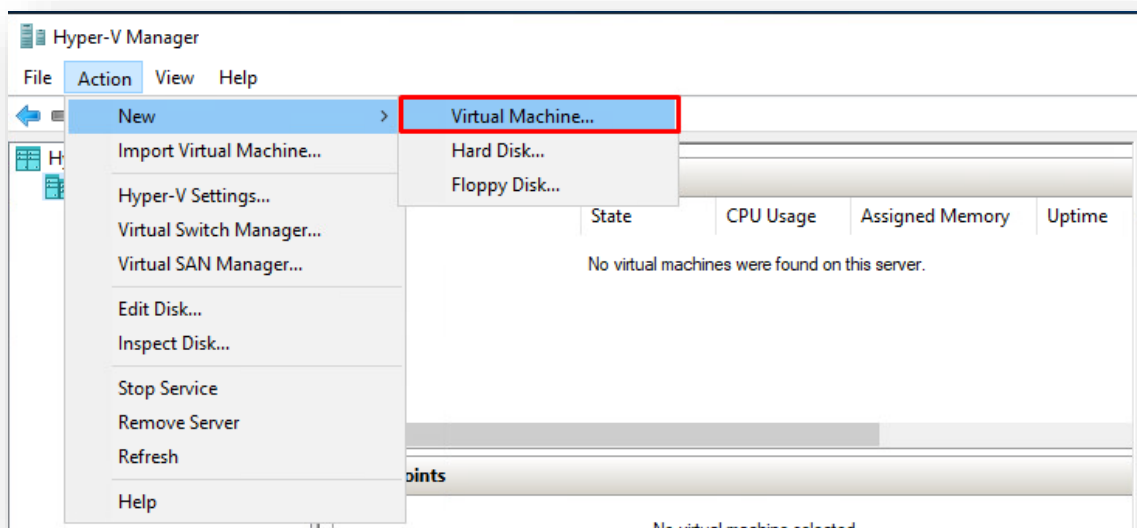


2. Import UDS Appliances to the virtual platform

Download the UDS Appliances and unzip them. See below an example with the UDS Server Appliance (**UDS-Server-XXzip**).

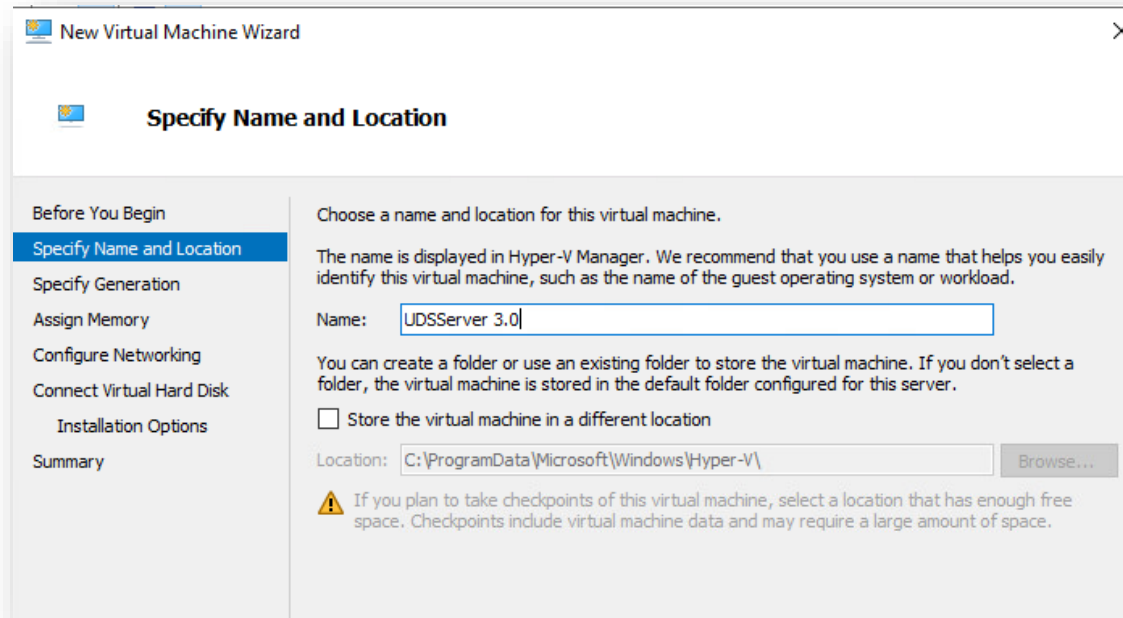


Access the Hyper-V environment through “**Hyper-V Manager**” and create a new virtual machine.

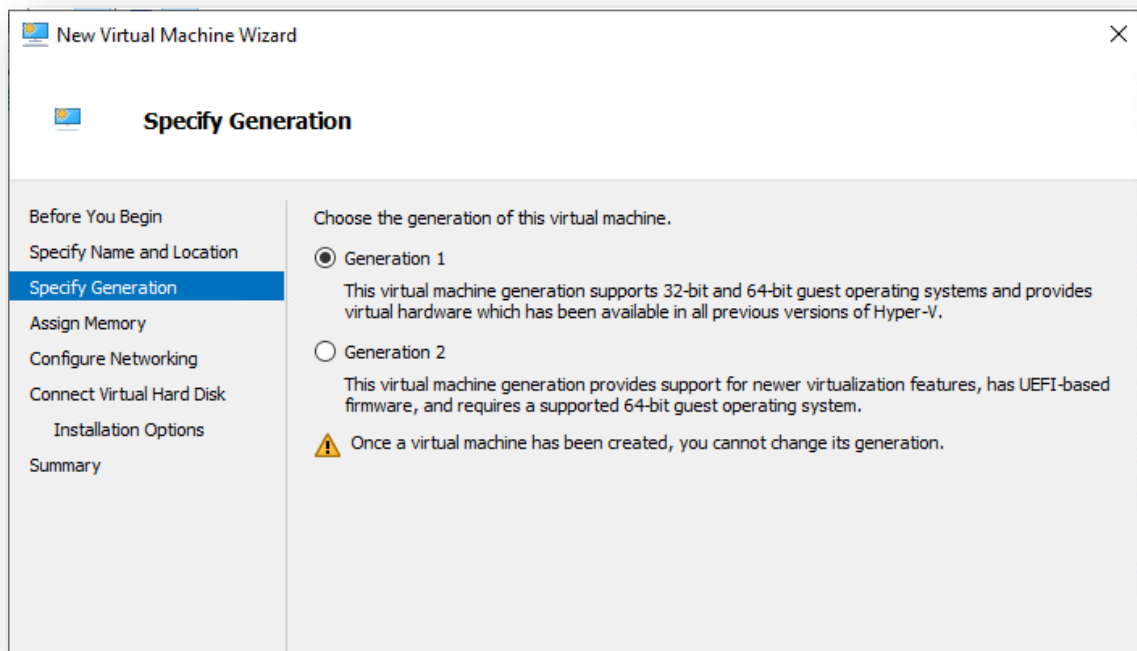




You will be asked to assign a name to the virtual machine.



Select "Generation 1".

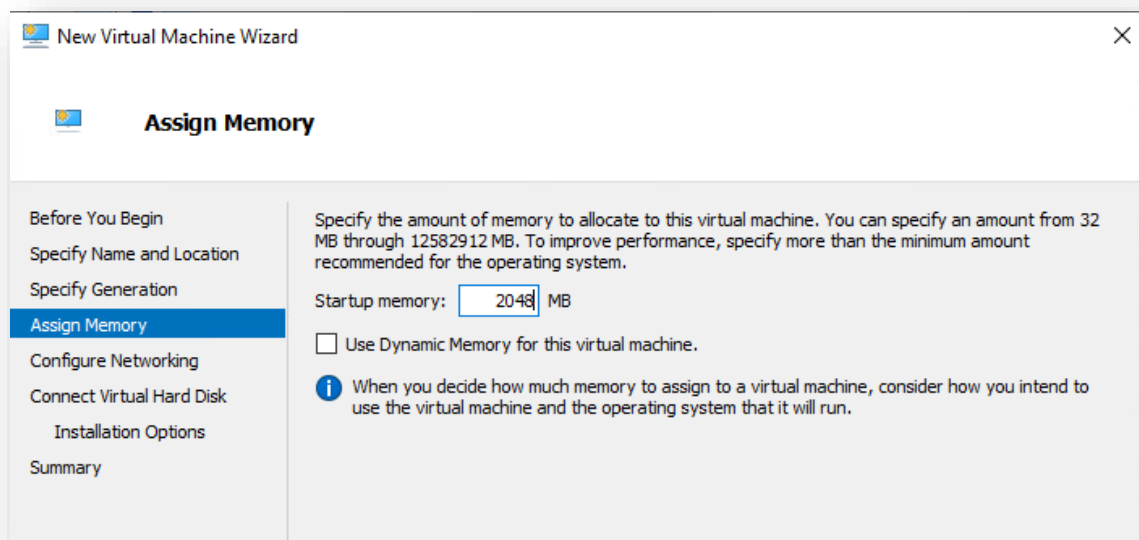




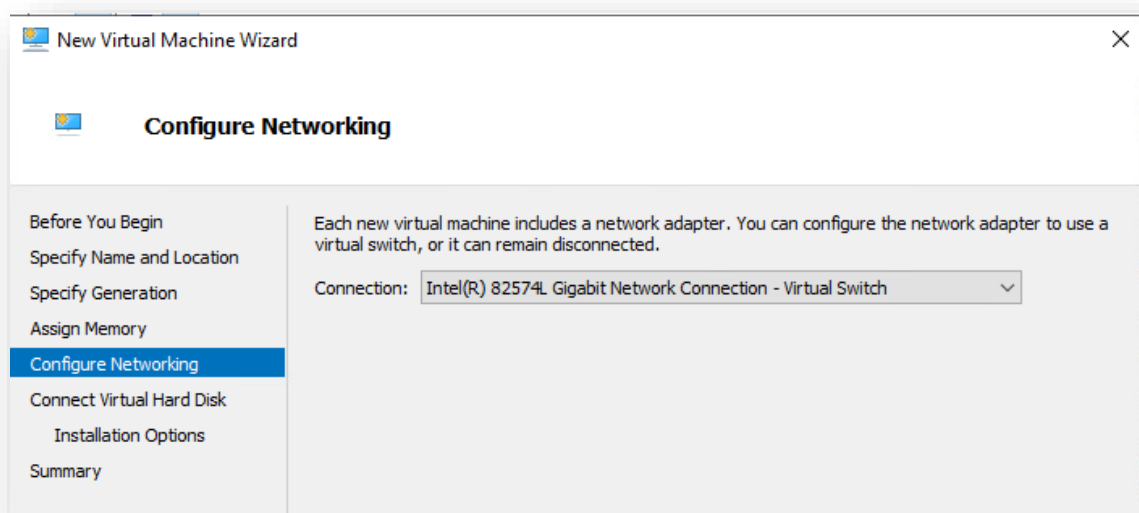
Assign the amount of memory that the virtual machine will have in MB (for UDS Server we indicate 2048).

The different UDS Appliances will have the following resources:

VM	Memory (MB)	vCPUs	STORAGE
MySQL	1024	2	10
Server	2048	2	10
Tunnel	2048	2	15

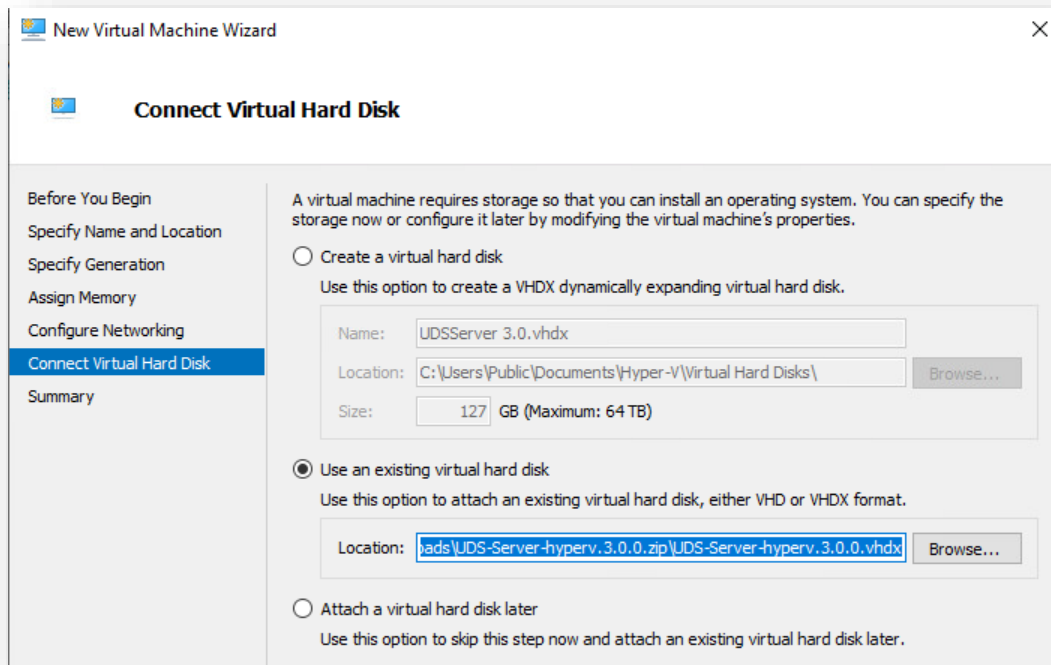


Assign a network to the virtual machine.

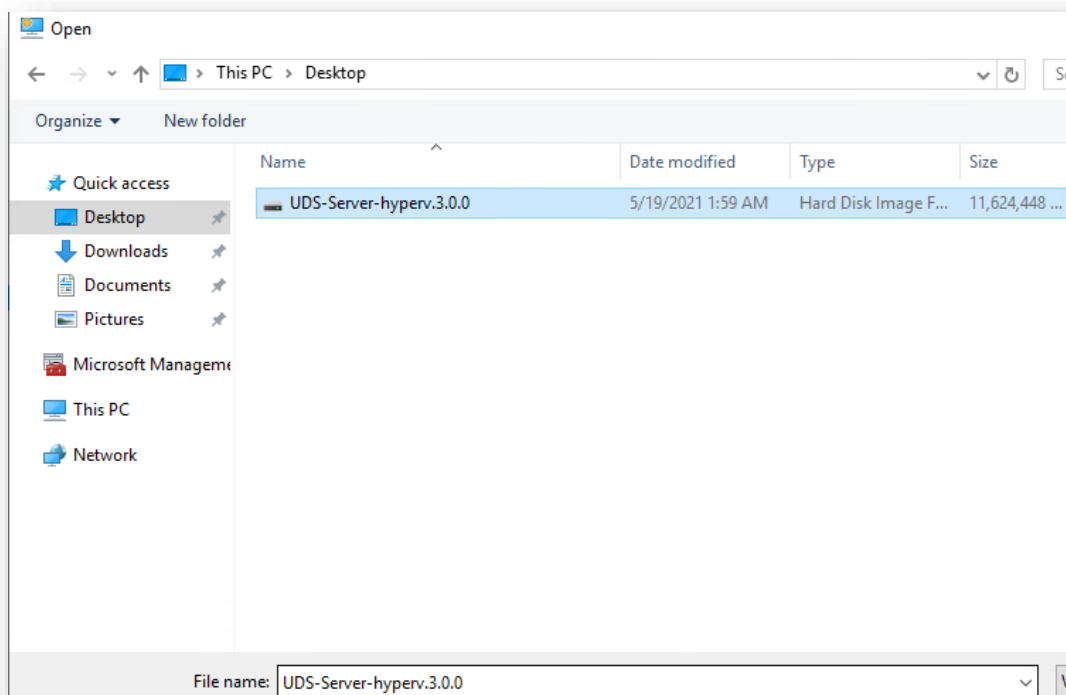




In the next step select the option "Use an existing virtual hard disk" and indicate the path of the folder that contains the Appliance disk (.vhd or .vhdx file).

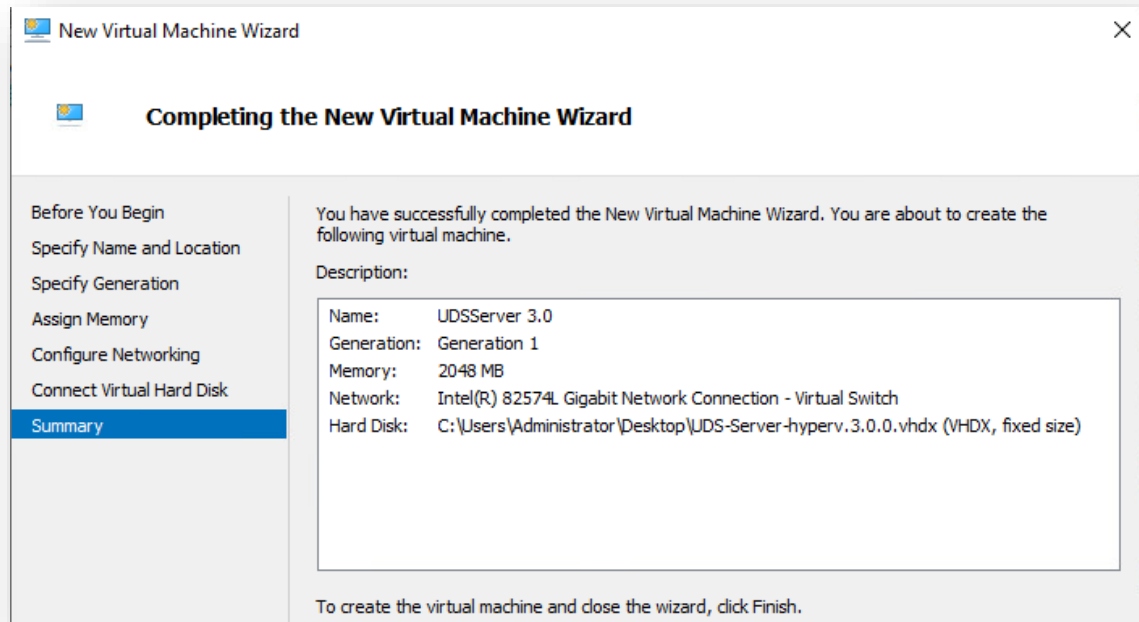


Choose the Appliance.





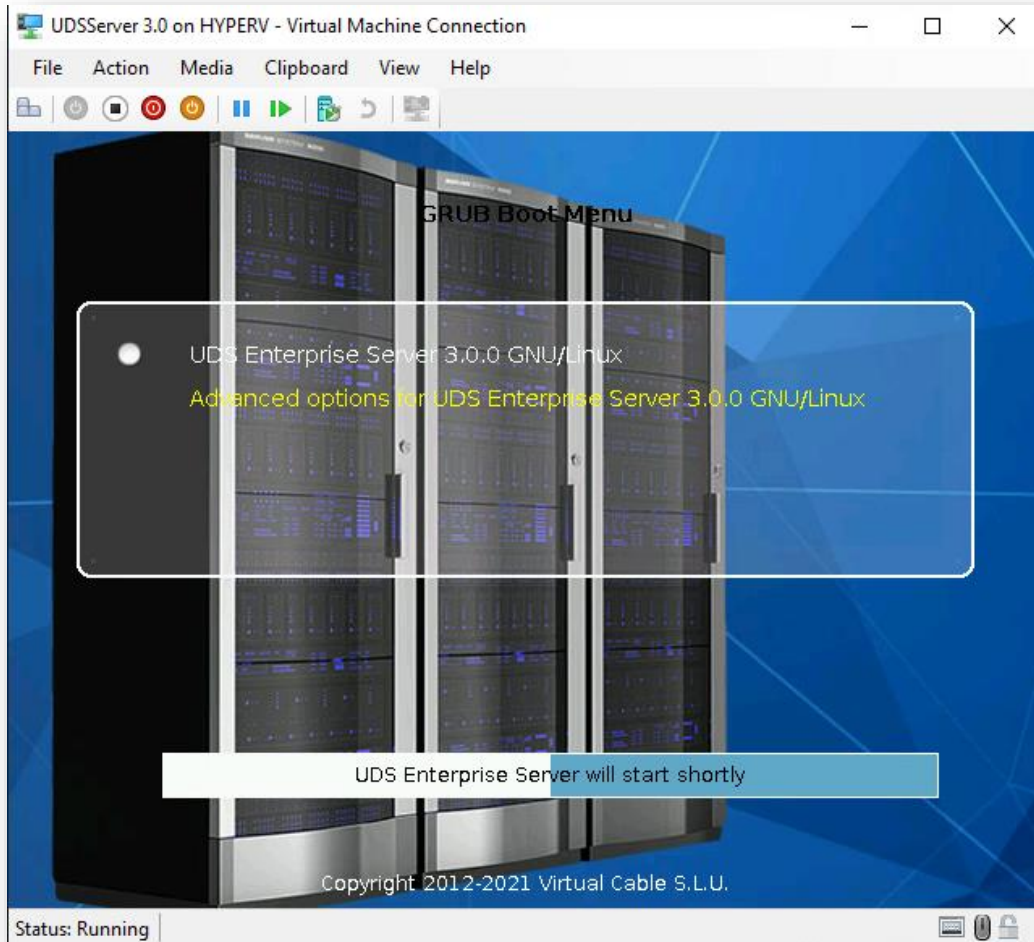
Check that all the data is correct and finalize.





3. Starting UDS servers

Once the creation of the new virtual machine and import of the UDS Appliance disk is finished, turn on the VM and start a console to begin with the server configuration.



Wait for the VM to start and proceed with the configuration of the UDS Appliance (see [Installation, Administration and User Manual of UDS Enterprise](#)).

NOTES:

1. If you want to use the UDS Tunnel component (which will provide you with WAN access and HTML5 access to the different services) repeat the same tasks previously described using the UDS-Tunnel.xzip file.
2. If you do not have your own database server to host the UDS Enterprise database, you can download a virtual machine from the same repository with a database server already prepared for this purpose. We remind you that this server is not part of UDS Enterprise, and therefore, it is not supported.



About virtual Cable

Virtual Cable develops and markets UDS Enterprise through a subscription model by number of users that includes support and updates.

In addition, Virtual Cable offers professional services to install and configure UDS Enterprise.

For more information visit www.udsenderprise.com or email us at info@udsenderprise.com