



Introduction

UDS Enterprise update is a quick and easy process, but we should bear in mind some tasks that must be performed before updating and which ones are essential for the new version to work properly.

UDS Server component will perform the MySQL database (DB) update, making it compatible with the new version.

The UDS Tunneler machine doesn't need any update process, since it keeps no information. A new deployment will be enough.

To update UDS Enterprise we must perform the following tasks:

- Deploy UDS Server and UDS Tunneler new Virtual Appliances into a supported hypervisor platform
- Turn off UDS Enterprise previous version servers (broker and tunneler)
- Setup new UDS Servers (broker and tunneler)

Compatibility between versions

UDS Enterprise allows to update to new software versions, but only between contiguous versions.

If you'd like, for example, to update UDS Enterprise 1.9 to Enterprise 2.2, you must update to version 2.0, then from 2.0 to 2.1 first and finally from 2.1 to 2.2.

UDS Enterprise	2.2.1	2.2	2.1	2.0	1.9	1.7	1.5	1.2
2.2	✓							
2.1	✓	✓						
2.0	✗	✗	✓					
1.9	✗	✗	✗	✓				
1.7	✗	✗	✗	✗	✓			
1.5	✗	✗	✗	✗	✗	✓		
1.2	✗	✗	✗	✗	✗	✗	✓	
1.0	✗	✗	✗	✗	✗	✗	✗	✓



Before starting update process

Before updating UDS Enterprise you must follow these steps:

- Gather all current servers configuration data: DNS name, IP, network mask, Gateway, DNS
- Get a valid serial number for the new UDS Server Appliance deployment
- Get all connection data against MySQL DB (IP server address, instance name user name and password).
If a MySQL DB provided by VirtualCable is used, the default data are:
 - Instance: uds
 - User: uds
 - Password: uds
- In case a customized HTML template is used in UDS Server for the user login windows, services, downloads, etc, they must be exported from previous UDS Server and copy them again, since these changes are not saved into the DB
- **It is highly recommended to make a MySQL DB server snapshot or backup to keep a valid restore point in case any issue occurs during UDS Server update**



UDS Server update

In order to update UDS Server, MySQL server must be accessible and running.

During the update process the current UDS Server is replaced by the new one, this latter will be connected to the existing MySQL DB.

In order to perform the update process, you should follow these steps:

Step 1. Upload UDS Server Virtual Appliance to hypervisor platform.

We'll perform the proper procedure for each hypervisor platform. For further information, see [UDS Enterprise Installation, Administration and User Guide](#).

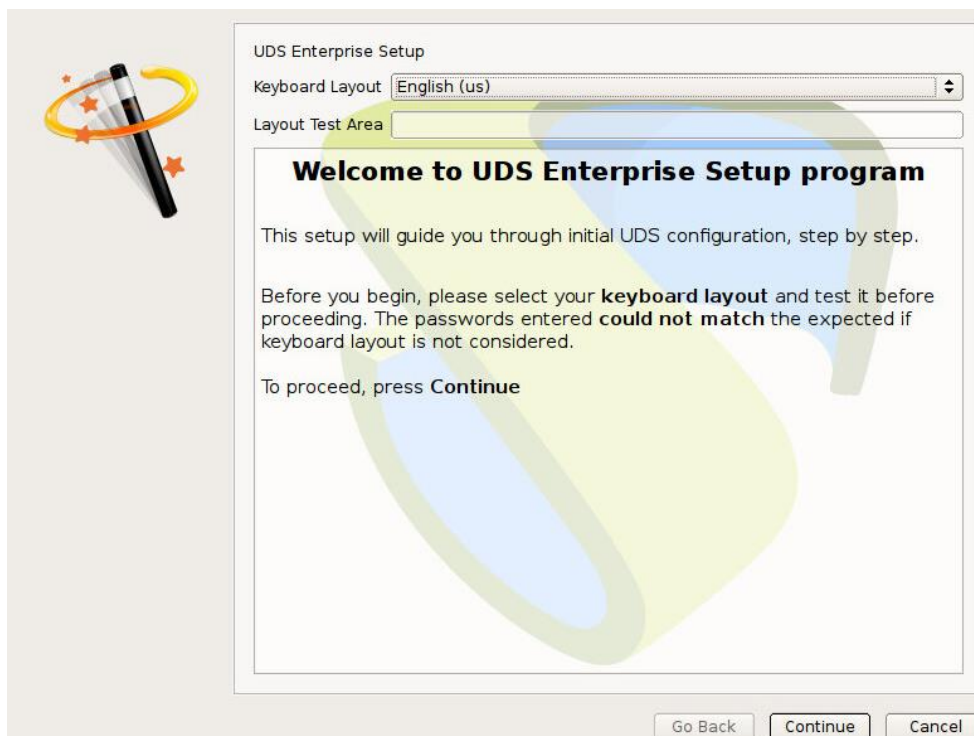
Step 2. Turn off previous UDS Server.

UDS Server must be disconnected from network. Once the MySQL DB update process is finished, the server must not be reconnected or rebooted, unless you have performed a backup or a MySQL DB snapshot before the update process.

Step 3. Run and setup new UDS Server.

Run UDS Server virtual machine and start the setup process entering the same data we had in the previous version.

Select keyboard layout:



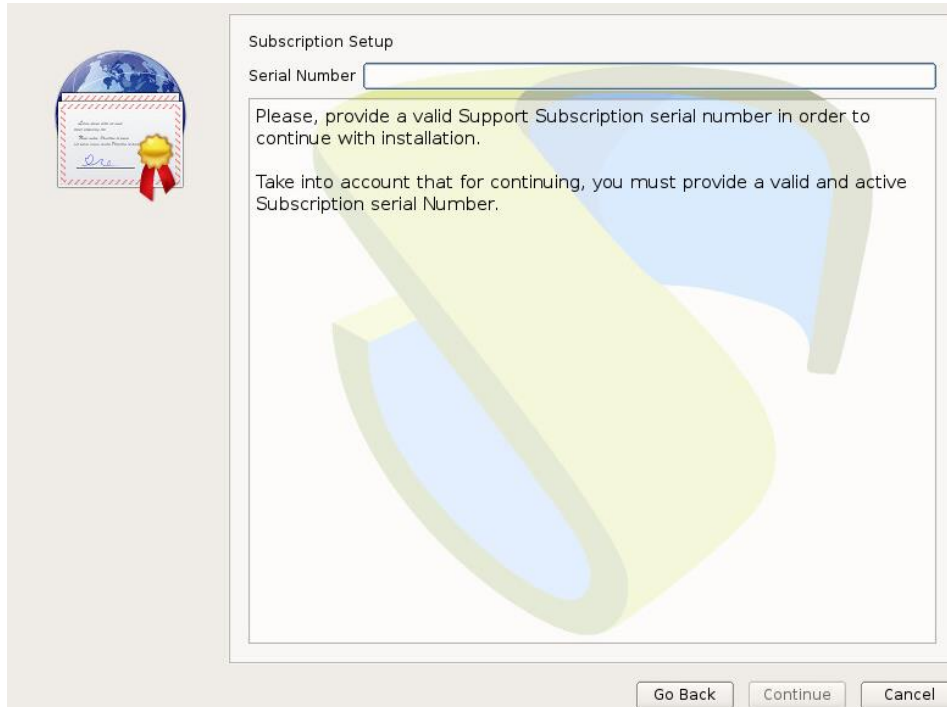


UDS Enterprise

UDS Enterprise update procedure

www.udsenderprise.com

Enter a valid serial number:



The dialog box is titled "Subscription Setup" and features a globe icon with a ribbon on the left. It contains a "Serial Number" input field at the top. Below the field, there is instructional text: "Please, provide a valid Support Subscription serial number in order to continue with installation." and "Take into account that for continuing, you must provide a valid and active Subscription serial Number." At the bottom right, there are three buttons: "Go Back", "Continue", and "Cancel".

Subscription Setup

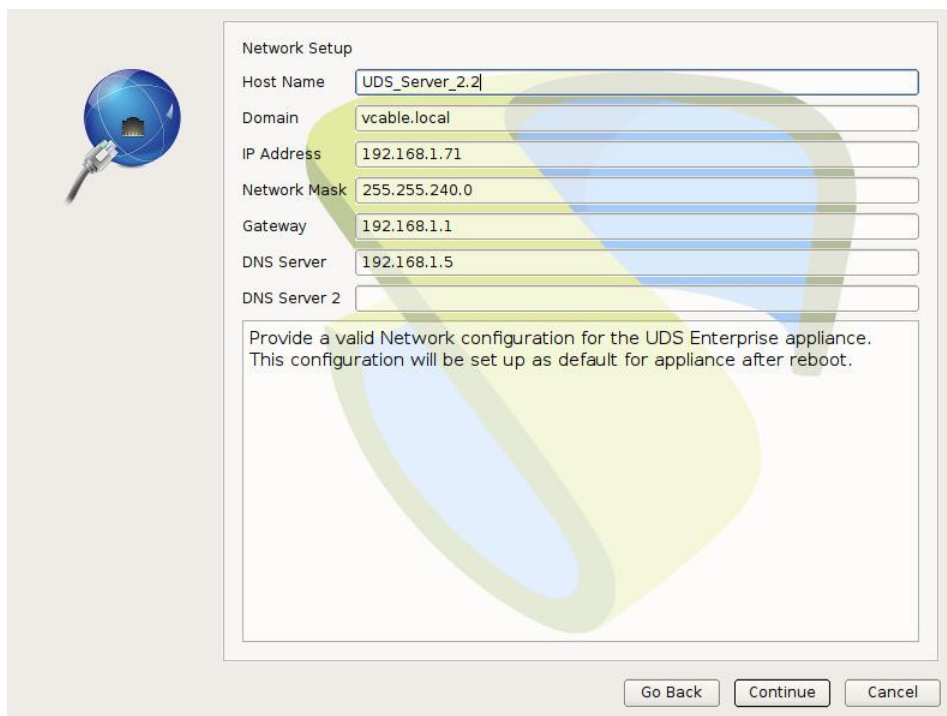
Serial Number

Please, provide a valid Support Subscription serial number in order to continue with installation.

Take into account that for continuing, you must provide a valid and active Subscription serial Number.

Go Back Continue Cancel

Provide IP data and server name:



The dialog box is titled "Network Setup" and features a globe icon with a network cable on the left. It contains several input fields for network configuration: "Host Name" (UDS_Server_2.2), "Domain" (vcable.local), "IP Address" (192.168.1.71), "Network Mask" (255.255.240.0), "Gateway" (192.168.1.1), "DNS Server" (192.168.1.5), and "DNS Server 2" (empty). Below the fields, there is instructional text: "Provide a valid Network configuration for the UDS Enterprise appliance. This configuration will be set up as default for appliance after reboot." At the bottom right, there are three buttons: "Go Back", "Continue", and "Cancel".

Network Setup

Host Name

Domain

IP Address

Network Mask

Gateway

DNS Server

DNS Server 2

Provide a valid Network configuration for the UDS Enterprise appliance. This configuration will be set up as default for appliance after reboot.

Go Back Continue Cancel

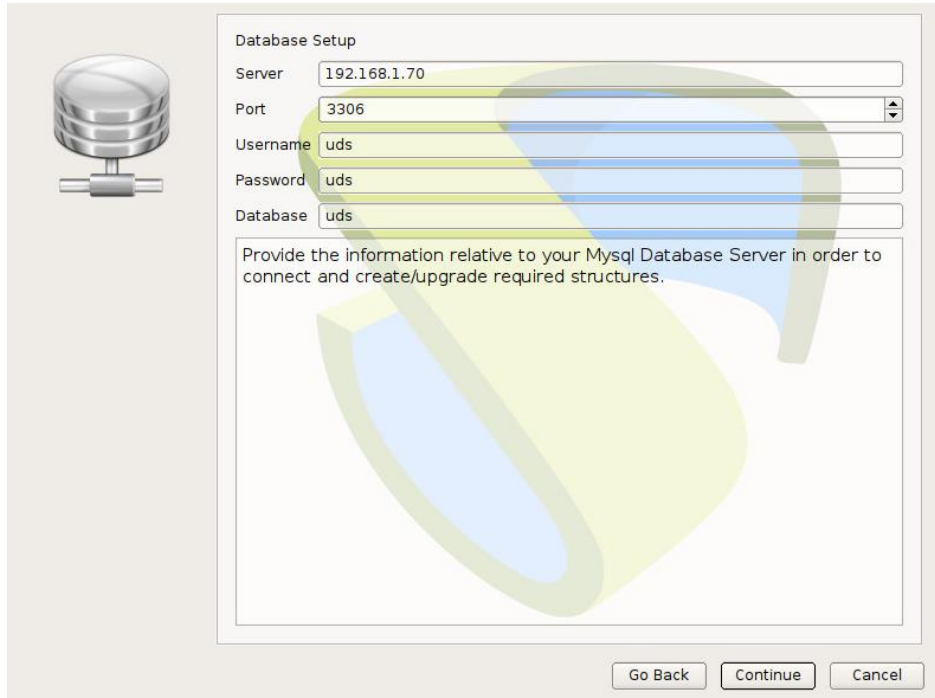


UDS Enterprise

UDS Enterprise update procedure

www.udsenderprise.com

Provide data to connect to current MySQL DB:



The 'Database Setup' dialog box contains a MySQL server icon on the left. The form fields are: Server (192.168.1.70), Port (3306), Username (uds), Password (uds), and Database (uds). A text area below contains instructions: 'Provide the information relative to your Mysql Database Server in order to connect and create/upgrade required structures.' At the bottom are 'Go Back', 'Continue', and 'Cancel' buttons.

Database Setup

Server

Port

Username

Password

Database

Provide the information relative to your Mysql Database Server in order to connect and create/upgrade required structures.

Setup UDS Enterprise administration user data:



The 'Security Setup' dialog box features a security icon on the left. The form fields are: Username (admin), Password (masked with asterisks), and Repeat Password (masked with asterisks). A 'Show' button is next to the Password field. A text area contains instructions: 'Provide a default username for administrator and a password for it. The username provided will be assigned as super administrator of UDS Enterprise platform for web access. The password will be assigned to this user, and for the root linux console user of this appliance. Please, consider your current keyboard layout for passwords field. The use of non ASCII characters for Username or password is not supported. If any non ASCII characters is detected, you will be not allowed to continue until they are removed from username & password. If you want to change root user or udsamin user passwords, you can do it later manually by using the console. If you want to change uds administrator web access password, you can do it later manually by using the UDS Dashboard.' At the bottom are 'Go Back', 'Continue', and 'Cancel' buttons.

Security Setup

Username

Password

Repeat Password

Provide a default username for administrator and a password for it. The username provided will be assigned as super administrator of UDS Enterprise platform for web access. The password will be assigned to this user, and for the root linux console user of this appliance. Please, consider your current keyboard layout for passwords field. The use of non ASCII characters for Username or password is not supported. If any non ASCII characters is detected, you will be not allowed to continue until they are removed from username & password. If you want to change root user or udsamin user passwords, you can do it later manually by using the console. If you want to change uds administrator web access password, you can do it later manually by using the UDS Dashboard.

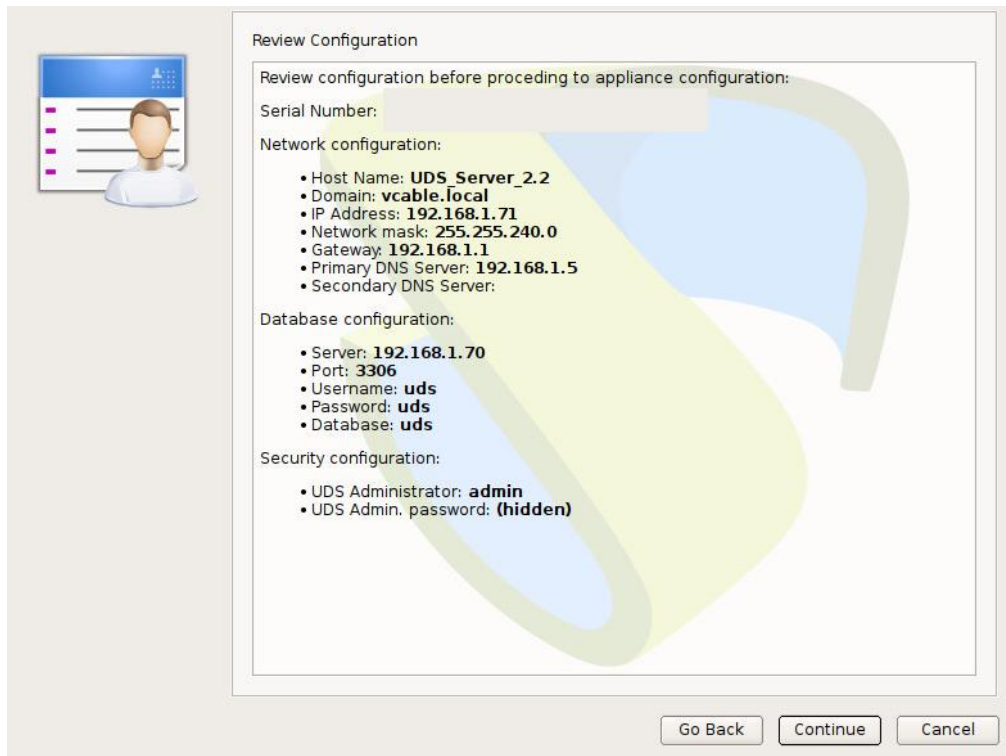


UDS Enterprise

UDS Enterprise update procedure

www.udsenderprise.com

Check out all data are correct and proceed to update UDS Server component:



Review Configuration

Review configuration before proceeding to appliance configuration:

Serial Number: [REDACTED]

Network configuration:

- Host Name: **UDS_Server_2.2**
- Domain: **vcable.local**
- IP Address: **192.168.1.71**
- Network mask: **255.255.240.0**
- Gateway: **192.168.1.1**
- Primary DNS Server: **192.168.1.5**
- Secondary DNS Server:

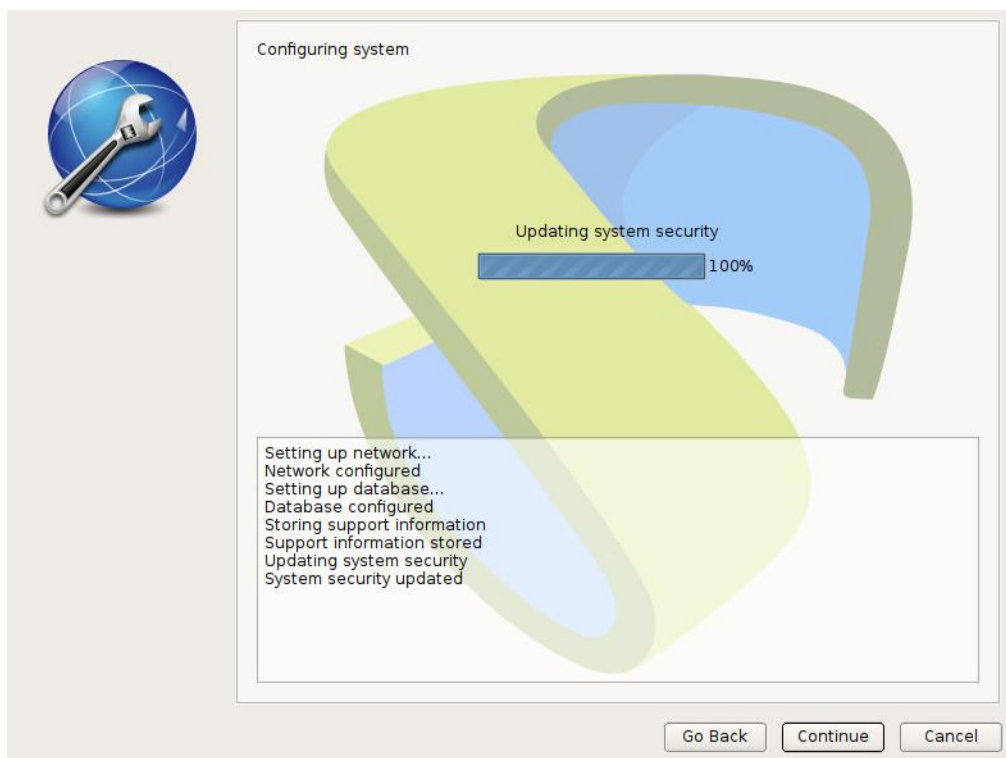
Database configuration:

- Server: **192.168.1.70**
- Port: **3306**
- Username: **uds**
- Password: **uds**
- Database: **uds**

Security configuration:

- UDS Administrator: **admin**
- UDS Admin. password: **(hidden)**

Go Back Continue Cancel



Configuring system

Updating system security

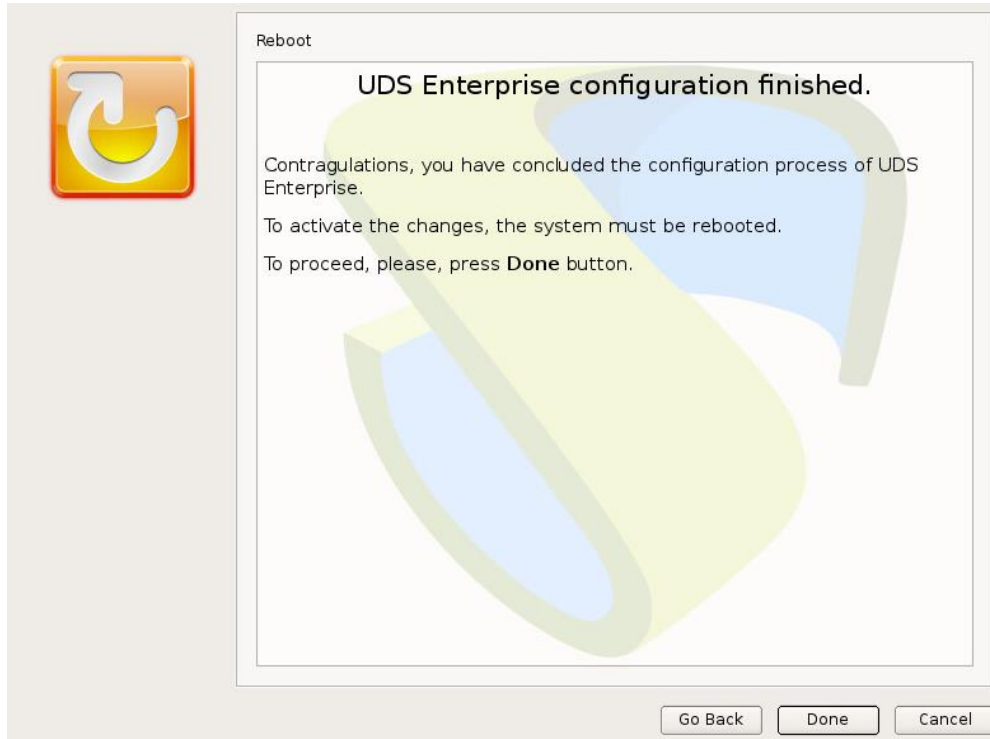
100%

Setting up network...
Network configured
Setting up database...
Database configured
Storing support information
Support information stored
Updating system security
System security updated

Go Back Continue Cancel



Once the process is finished, accept and reboot the server:



Step 4. Check UDS Server works properly:

In order to check that the update process has been properly performed, connect UDS Server via web browser, log in into the system and check all data in the previous version are now in the administration dashboard.



UDS Tunneler update

In order to update UDS Tunneler, MySQL server must be accesible and running.

During the update process the current UDS Tunneler is replaced by the new one, this latter will be connected to the existing UDS Server.

In order to perform the update process, you should follow these steps:

Step 1. Upload UDS Tunneler Virtual Appliance to the hypervisor platform.

We'll perform the proper procedure for each hypervisor platform. For further information, see [UDS Enterprise Installation, Administration and User Guide](#).

Step 2. Turn off previous UDS Tunneler

UDS Tunneler must be disconnected from network.

Step 3. Run and setup new UDS Tunneler.

Run UDS Tunneler virtual machine and start the setup process entering the same data we had in the previous version.

Select keyboard layout:



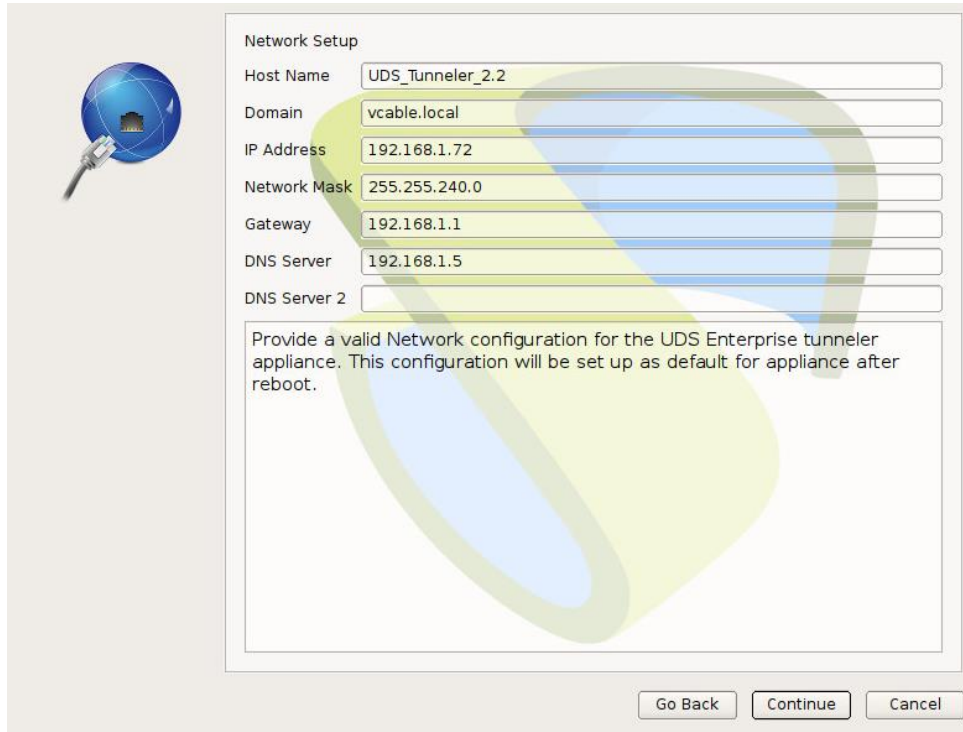


UDS Enterprise

UDS Enterprise update procedure

www.udsenderprise.com

Provide IP data and server name:



Network Setup

Host Name

Domain

IP Address

Network Mask

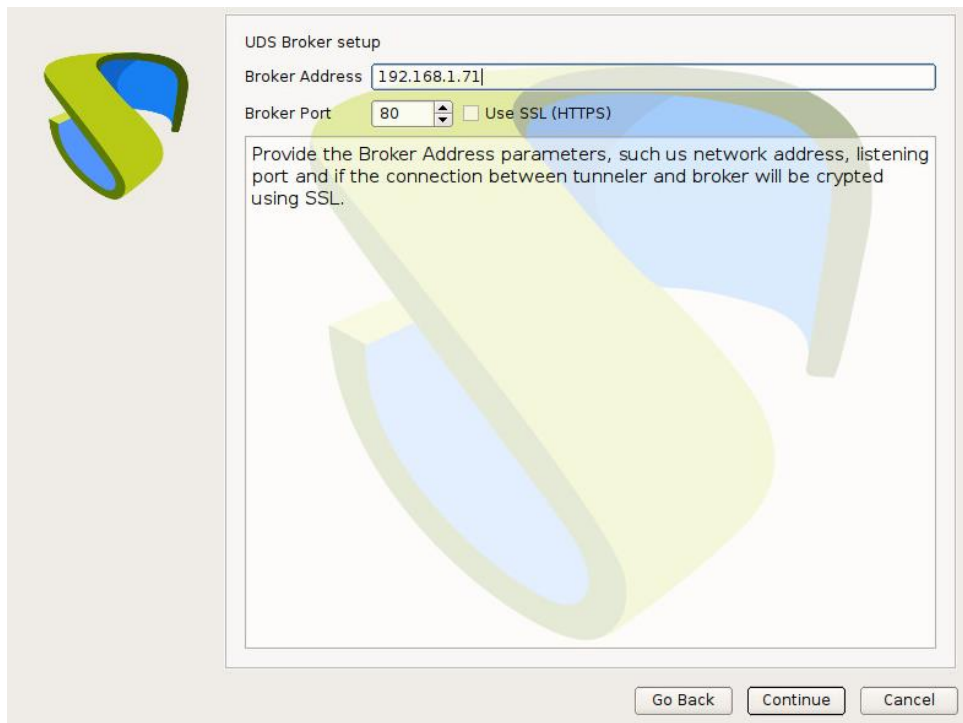
Gateway

DNS Server

DNS Server 2

Provide a valid Network configuration for the UDS Enterprise tunneler appliance. This configuration will be set up as default for appliance after reboot.

Enter new UDS Server machine IP address:



UDS Broker setup

Broker Address

Broker Port Use SSL (HTTPS)

Provide the Broker Address parameters, such us network address, listening port and if the connection between tunneler and broker will be crypted using SSL.



UDS Enterprise

UDS Enterprise update procedure

www.udsenderprise.com

Setup UDS Tunneler machine administration user data:



Security Setup

Username:

Password:

Repeat Password:

Provide a default username for administrator and a password for it. The username provided will be assigned as super administrator of UDS Enterprise platform for web access. The password will be assigned to this user, and for the **root** linux console user of this appliance.

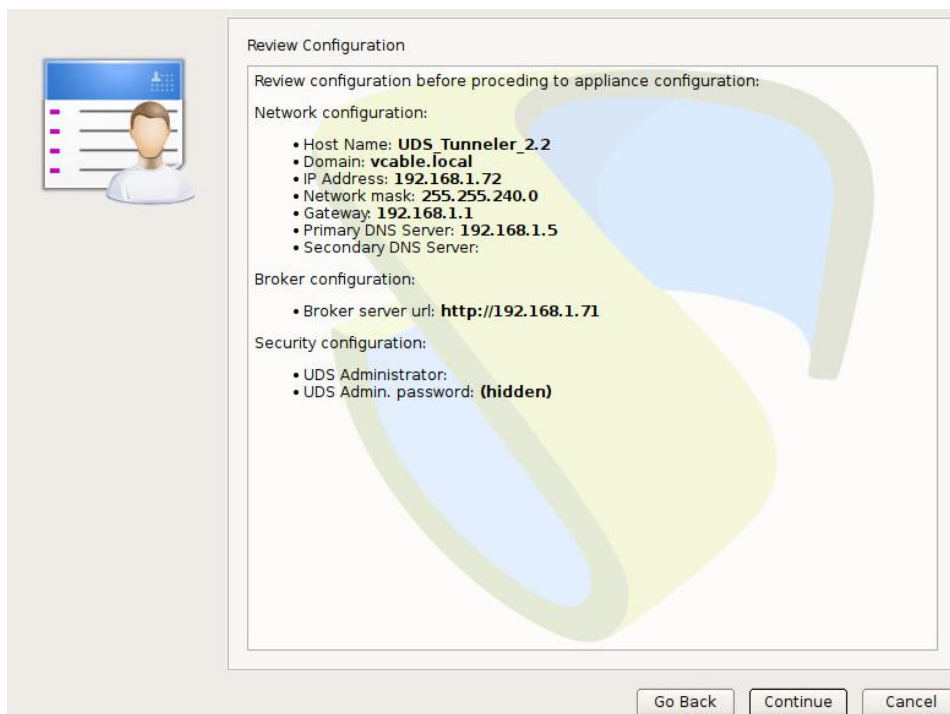
Please, consider your current **keyboard layout** for passwords field.

The use of non ASCII characters for Username or password is not supported. If any non ASCII characters is detected, you will be **not allowed to continue** until they are removed from username & password.

If you want to change root user or udsamin user passwords, you can do it later manually by using the console.

If you want to change uds administrator web access password, you can do it later manually by using the UDS Dashboard.

Check out all data are correct and proceed to install UDS Tunneler component:



Review Configuration

Review configuration before proceeding to appliance configuration:

Network configuration:

- Host Name: **UDS Tunneler_2.2**
- Domain: **vcable.local**
- IP Address: **192.168.1.72**
- Network mask: **255.255.240.0**
- Gateway: **192.168.1.1**
- Primary DNS Server: **192.168.1.5**
- Secondary DNS Server:

Broker configuration:

- Broker server url: **http://192.168.1.71**

Security configuration:

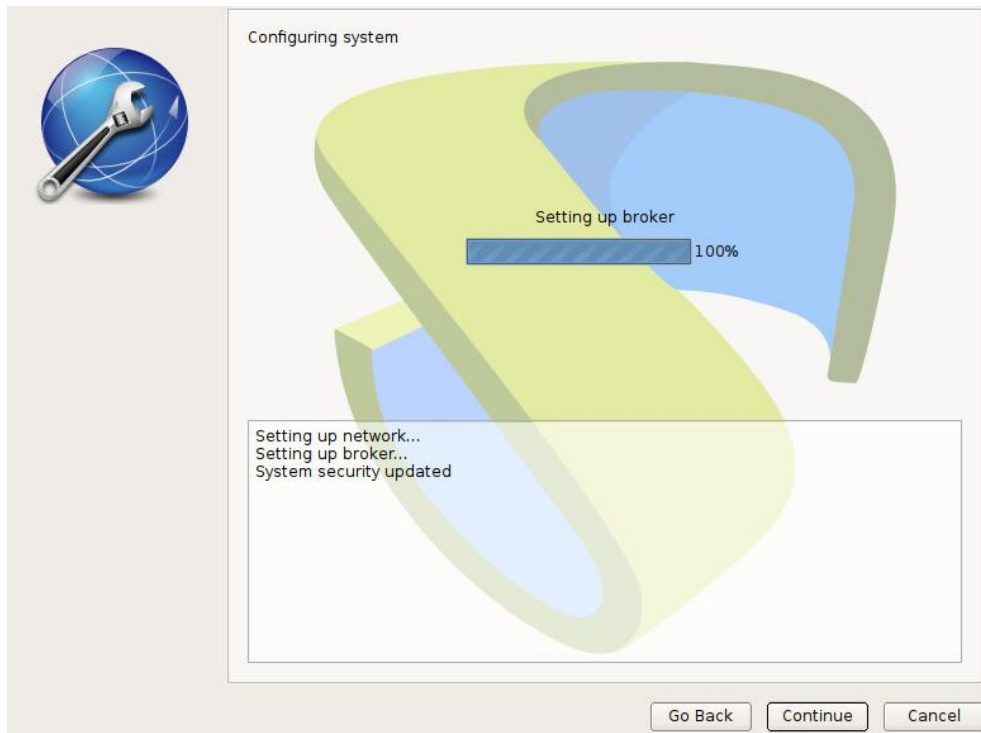
- UDS Administrator:
- UDS Admin. password: **(hidden)**



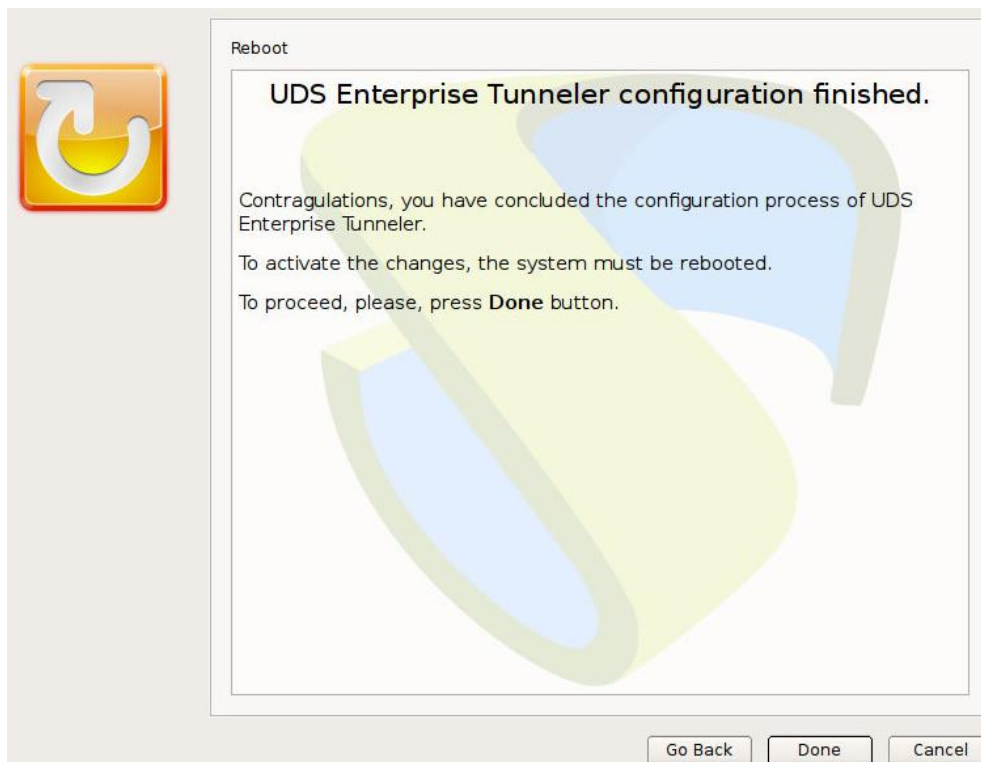
UDS Enterprise

UDS Enterprise update procedure

www.udsenderprise.com



Once the process is finished, accept and reboot the server:



Step 4. Check if UDS Tunneler works properly:

In order to check that the setup process has been properly performed, make a test connection to a virtual desktop.



Support and professional services

VirtualCable markets UDS Enterprise through a subscription system based on number of users, featuring support and product updates.

In addition, VirtualCable offers professional services to install and configure UDS Enterprise and other virtualization technologies.

For further information, visit www.udsenderprise.com or email us at info@udsenderprise.com