



## IMPORTING UDS ON CITRIX HYPERVISOR / XCP-NG

UDS Enterprise components are provided as Virtual Appliances. To upload these items on the Citrix Hypervisor platform, perform the following tasks:

### 1. Download UDS Appliances

Access your account at

<https://www.udsenderprise.com/en/accounts/login?next=/en/my-uds/>

Once inside, in the "My Downloads" section, select "UDS Enterprise Appliances compatible with Citrix Hypervisor / XCP-ng" (.OVA format):

My Downloads		
Component	Format	Version
UDS Enterprise Appliances compatible with VMware vSphere / Cloud Director	OVA	3.0
UDS Enterprise Appliances compatible with Citrix Hypervisor / XCP-ng	OVA	3.0
UDS Enterprise Appliances compatible with Nutanix AHV	RAW / QCOW2	3.0

It will take you to a download repository where you will find the UDS Appliances:

## Index of /3.0/stable/xcp

<u>Name</u>	<u>Last modified</u>	<u>Size</u>	<u>Description</u>
<a href="#">Parent Directory</a>		-	
<a href="#">UDS-Dbserver-xen.3.0.0.ova</a>	2021-05-31 13:55	587M	
<a href="#">UDS-Server-xen.3.0.0.ova</a>	2021-05-31 13:56	924M	
<a href="#">UDS-Tunnel-xen.3.0.0.ova</a>	2021-05-31 13:56	786M	

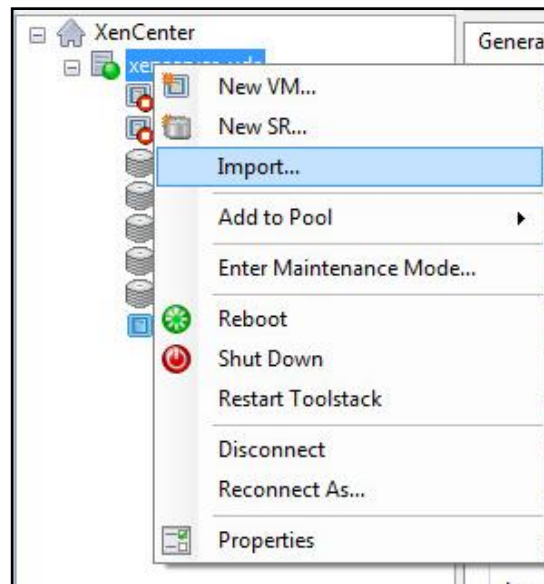
*Apache/2.4.25 (Debian) Server at images.udsenderprise.com Port 443*



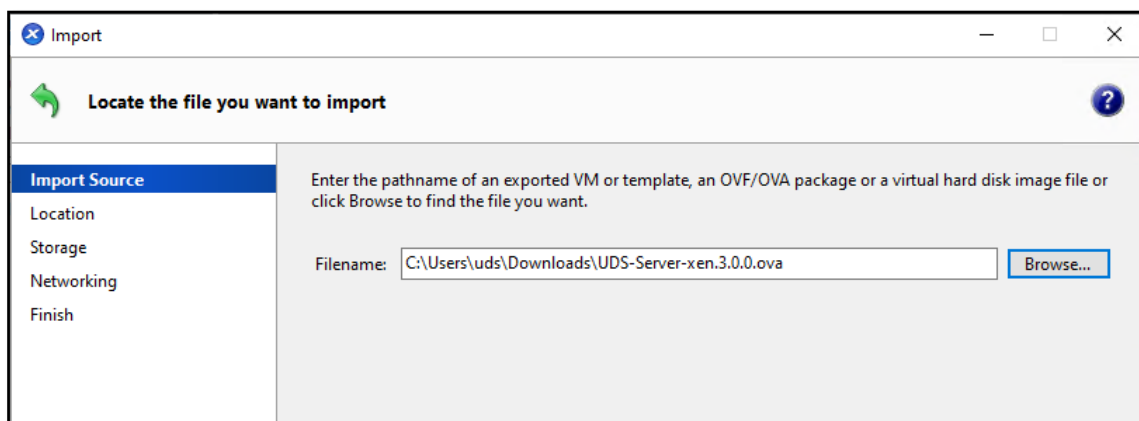
## 2. Import UDS Appliances on the virtual platform

Download the UDS Appliances. See below an example with the UDS Server Appliance (UDS-Server-XXova).

Access the Citrix Hypervisor environment and select the "Import" option:



Search and select the previously downloaded UDS Appliance.





Indicate where to host the server.

**Import OVF/OVA Package**

**Select the location where the imported VM will be placed**

Import Source  
EULAs  
**Location**  
Storage  
Networking  
Security  
OS Fixup Settings  
Finish

Choose the pool or standalone server where you want to place the VM(s). If required, you can also specify a Home Server within the selected pool for each imported VM.

Import VM(s) to: citrix

Assign imported VM(s) to a home server:

VM	Home Server
UDS Server 3.0.0	citrix

Select the storage.

**Import OVF/OVA Package**

**Select target storage**

Import Source  
EULAs  
Location  
**Storage**  
Networking  
Security  
OS Fixup Settings  
Finish

Place the virtual disks in the VMs you are importing onto storage repositories (SRs) in the destination pool or standalone server.

Place all imported virtual disks on this target SR:  
Local storage on citrix, 57.4 GB available

Place imported virtual disks onto specified target SRs:

VM - Virtual Disk	Storage Repository
UDS Server 3.0.0 - disk0 (8 GB)	Local storage on citrix, 57.4 GB available

Assign a network.

**Import OVF/OVA Package**

**Select network to connect VM**

Import Source  
EULAs  
Location  
Storage  
**Networking**  
Security  
OS Fixup Settings  
Finish

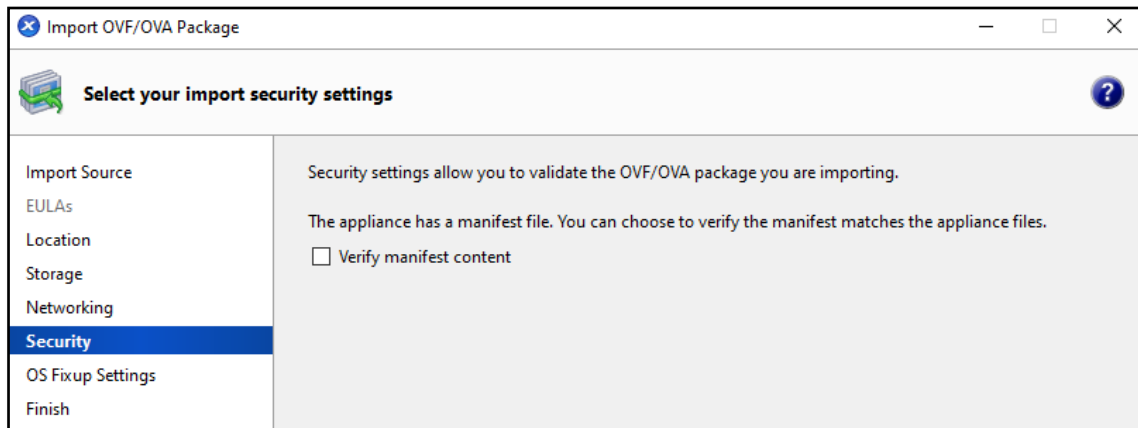
Map the virtual network interfaces in the VMs you are importing to networks in the destination pool or standalone server.

Virtual network interfaces in imported VMs:

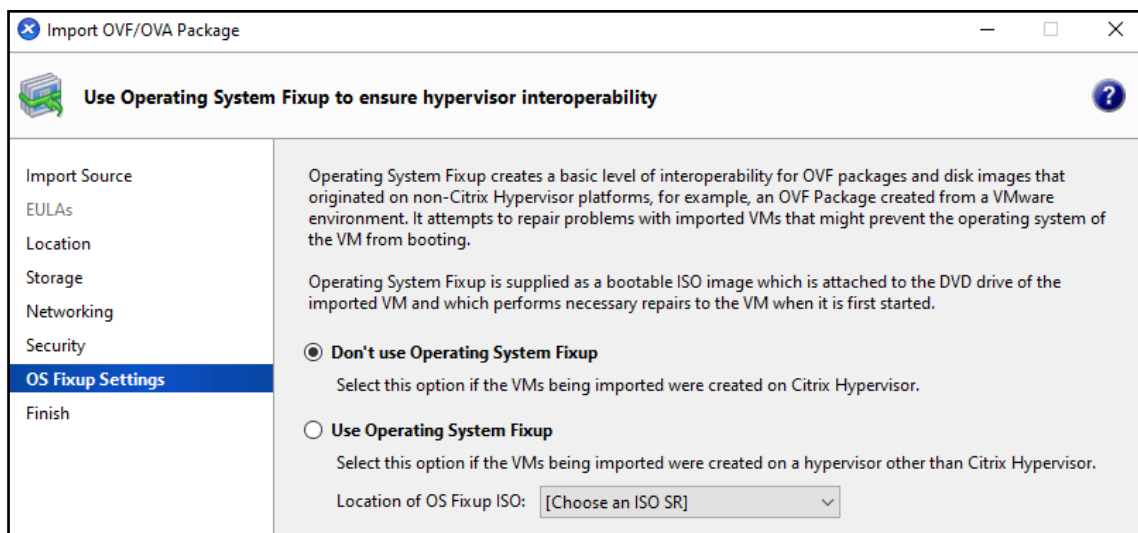
VM - Virtual Network Interface	Target Network
UDS Server 3.0.0 - ethernet0 (<autogenerated MAC>)	Network 0



The "Security" section is left by default.

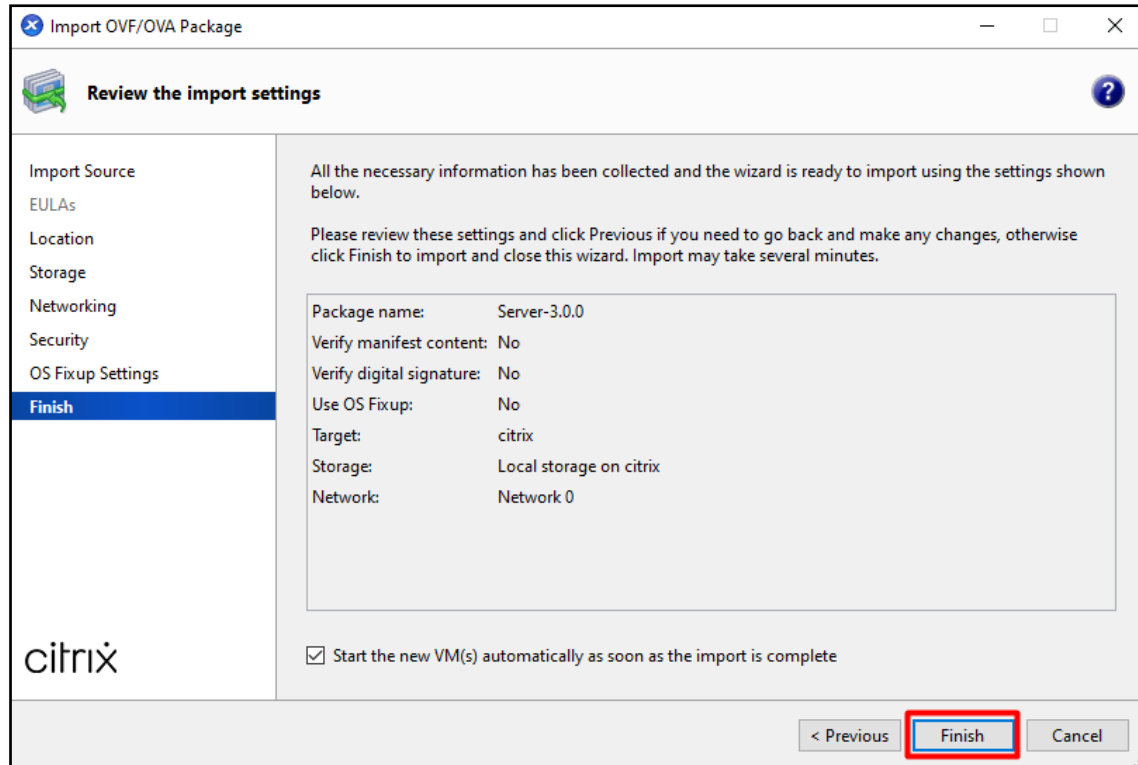


Mark "Don't use Operating System Fixup".





Verify all the data in the configuration summary and finish the wizard to start the import process.





## 3. Start UDS servers

Once the import of the UDS Appliance is finished, turn on the VM and start a console to begin with the server configuration.

```
UDS Enterprise Server v3.0.0 uds tty1
uds login: root (automatic login)

Last login: Thu May 20 13:37:38 CEST 2021 on tty1
Linux uds 4.19.0-16-amd64 #1 SMP Debian 4.19.181-1 (2021-03-13) x86_64
UDS Enterprise Server v3.0.0
UDS Enterprise comes with ABSOLUTELY NO WARRANTY,
to the extent permitted by applicable law.
UDS Enterprise broker CLI tool
Your appliance is currently unconfigured.
In order to configure it, you need to go through the setup process.
Since UDS 3.0, the configuration is done using a web browser.
UDS Enterprise setup launcher
Your appliance IP is 192.168.1.79. We are going to start the web setup process for you right now.
To configure your appliance, please go to this URL: http://192.168.1.79:9900
The setup process will be available until finished or the appliance is rebooted.
root@uds:~# _
```

Click on **"Start"** and select the **"Console"** tab in the menu. Wait for the VM to start and proceed with the configuration of the UDS Appliance (see [Installation, Administration and User Manual of UDS Enterprise](#)).

### NOTES:

1. If you want to use the UDS Tunnel component (which will provide you with WAN access and HTML5 access to the different services) repeat the same tasks previously described using the UDS-Tunnel.xxova file.
2. If you do not have your own database server to host the UDS Enterprise database, from the same repository you can download a virtual machine with a database server already prepared for this purpose. We remind you that this server is not part of UDS Enterprise, and therefore it is not supported.



## About Virtual Cable

Virtual Cable develops and markets UDS Enterprise through a subscription model by number of users, including support and updates.

Also, Virtual Cable offers professional services to install and configure UDS Enterprise.

For further information visit [www.udsenderprise.com](http://www.udsenderprise.com) or email us at [info@udsenderprise](mailto:info@udsenderprise)